

Features

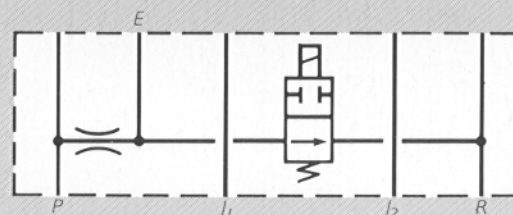
- Fits under 62 & 760 Series valves
- Energises Moog Lock-Up Module (E501) and Moog Isolation Module (E502)
- Fail-safe design for dirt resistance
- Optional coil voltages
- Encapsulated coil for high reliability
- Port pattern to BS6494 Part 2, Type 4

Typical applications

In applications that employ system monitoring, the module can be used in conjunction with the E501 Module to lock an actuator upon system malfunction.

In applications such as critical materials testing, the module can be used in conjunction with the E502 Module to prevent supply pressure turn-on transients from damaging the specimen.

Description



This unit contains a 2-way normally-open, pilot-operated solenoid and an orifice. When the solenoid is de-energised, the E port is connected to return through a low impedance. The E port is therefore at low pressure. When the solenoid is energised, the connection to return is blocked and the E port attains the supply pressure.

This approach prevents unsafe failure modes to which spring loaded spool type solenoids are susceptible when running on contaminated fluid.

Specification

Maximum pressure, 315 bar.

Seal material, Buna N for petroleum based hydraulic oils, water-oil emulsions or water-glycol mixtures. Other seal materials available on request.

Solenoid coil rating, 24V DC, 500mA standard
 12V DC, 1A
 115V AC, 100mA } optional
 230V AC, 50mA

Coils are rated for continuous operation.

Connector, Hirshman (standard)
 Hirshman with lamp (optional).

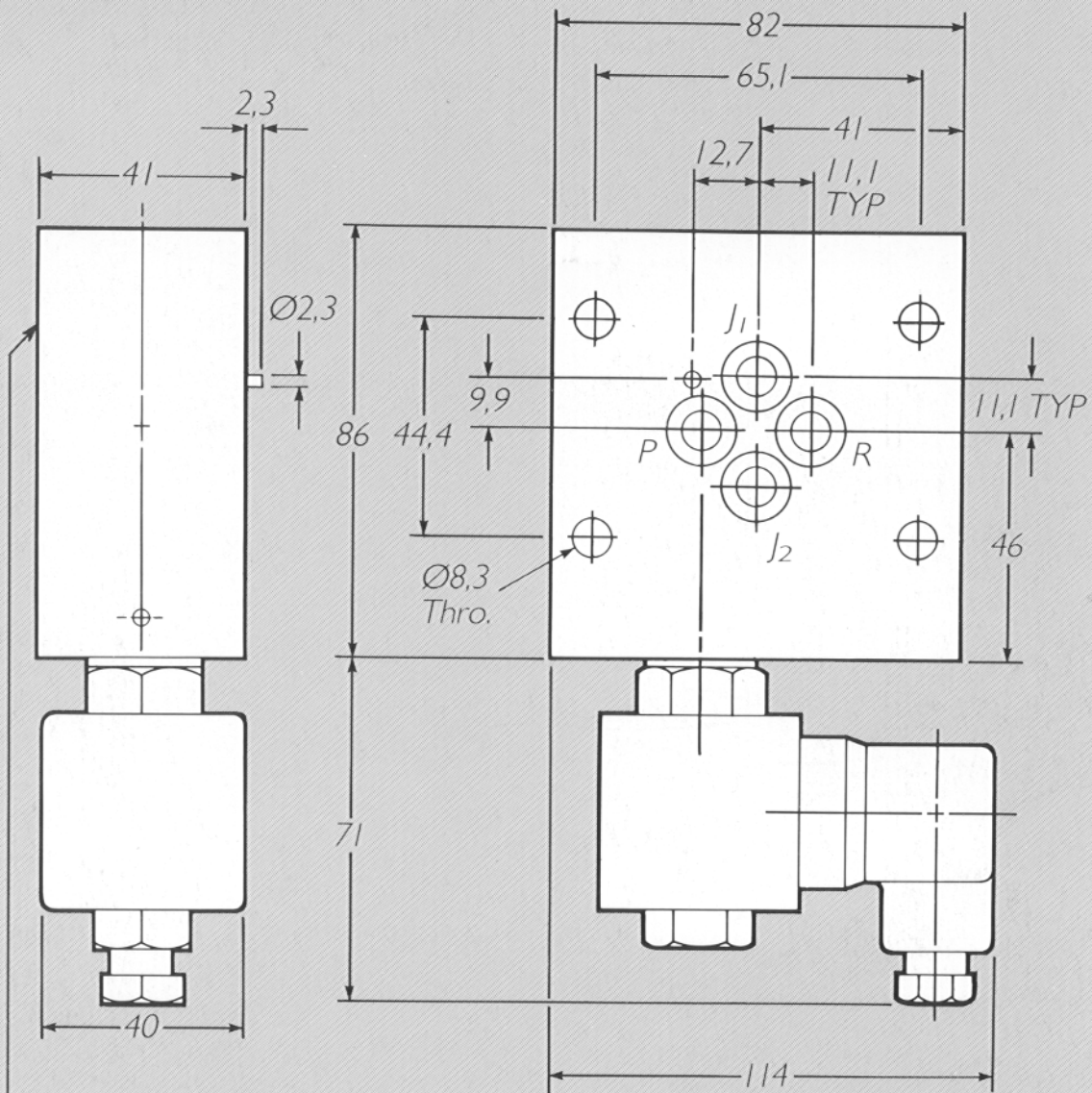
Operating sense (standard) E line is low when solenoid is de-energised.

Optional operation, E line is low when solenoid is energised.

Solenoid leakage when de-energised,
 1,2 l/min. at 70 bar supply
 2,1 l/min. at 210 bar supply.

Replacement seal kit, Moog part no. A75202.

Installation



'E' Port situated on this face to mate directly with E501 or E502 modules

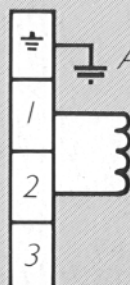
Dimensions in mm.

Ports

Ports P, R, J_1 and J_2

O-rings 1,78mm section x 10,82mm I.D.

Coil wiring



AC Options only

We reserve the right to alter specification without prior notice. For full installation details please consult Moog.

MOOG

Moog Controls Limited, Ashchurch, Tewkesbury
Gloucestershire, England. GL20 8NA